

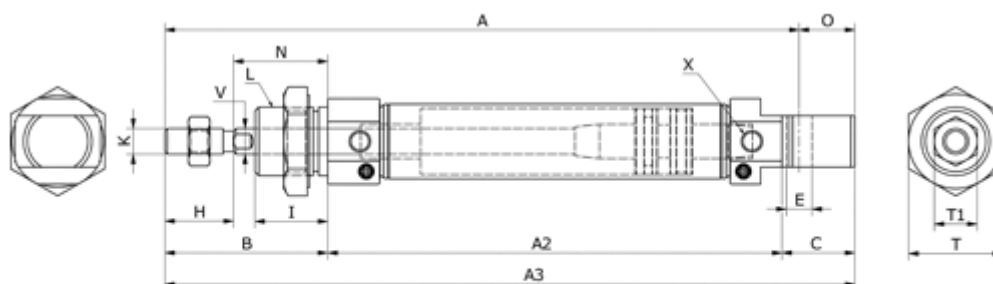
# Data Sheet



Article number: 58MIC16S0125CAP

Description: Cylinder MIC-16x125-S-CA, Ø16x125  
Double acting with cushin type - port M5

## Measures



A	= 98	I	= 17	V	= 6
A2	= 56	K	= M6x1,0	X	= M5x0,8
A3	= 111	L	= M16x1,5		
B	= 38	N	= 22		
Bore diameter	= 16	O	= 13		
C	= 17	Stroke	= 125		
E	= 6	T	= 10		
HS	= 16	T1	= 22		